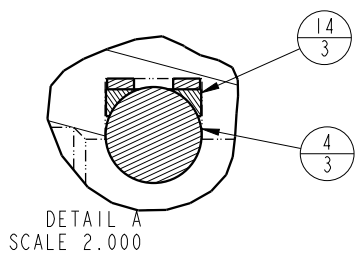
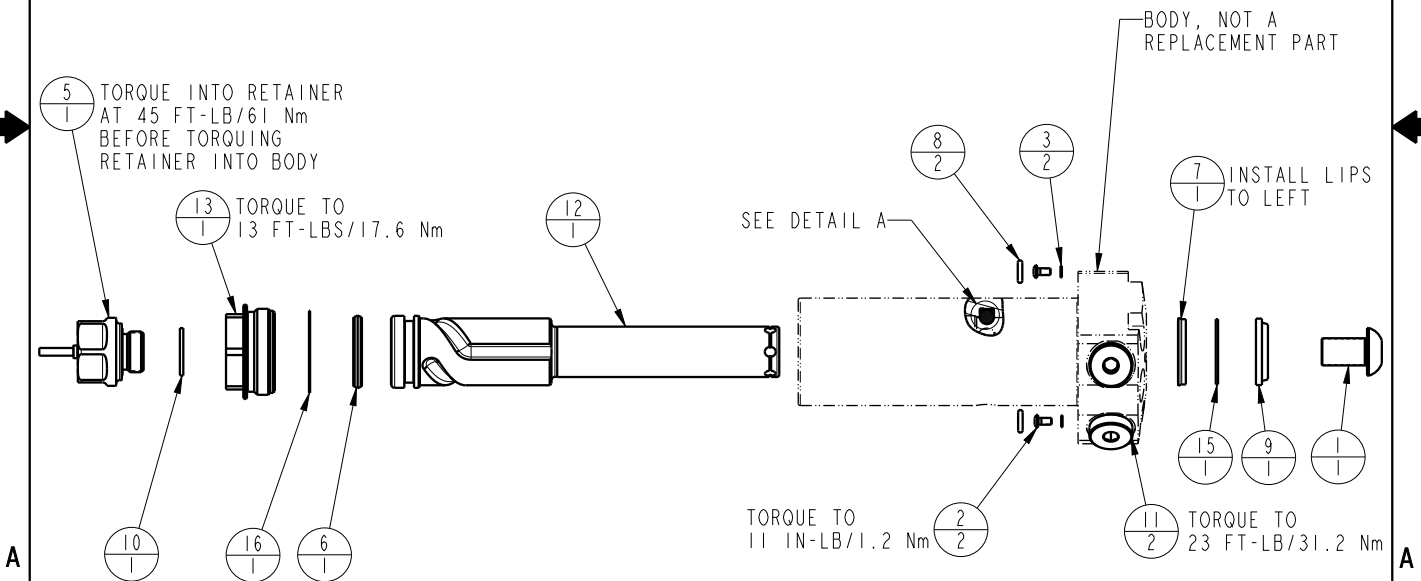


| NO | QTY | PART NO | DESCRIPTION | STD SEAL KIT | FKM SEAL KIT |
|-----|-----|----------|--|--------------|--------------|
| 1 | 1 | 21500010 | SCREW, CAP, BTNH, M12 X 20, ALY | | |
| 2 | 2 | 21500019 | SCREW, CAP, BTNH, M3 X 6, ALY | | |
| 3 | 2 | 21500200 | WASHER | | |
| 4 | 3 | 23600002 | BALL, STEEL, ALLOY, .250 | X | X |
| 5 | 1 | 29740200 | SENSOR, ULTRASONIC, M12, 1m | | |
| 6 | 1 | 39011030 | SEAL,CROWN,1-1/16x1-1/4x5/32 | X | 39V11030 |
| 7 | 1 | 39011046 | SEAL,BEVEL W/HEEL INSERT,7/8 x1/8 x1 1/8 | X | 39V11046 |
| 8 | 2 | 39051076 | O-RING, (6mm x 2) | X | 39V51076 |
| 9 | 1 | 39053000 | WIPER,SNAP-IN, (7/8) | X | X |
| 10 | 1 | 43000040 | O-RING, DIN3869, M18 | | 43000041 |
| 11 | 2 | 43068006 | PLUG, PORT, HOLLOW HEX, G1/4 | | |
| 12 | 1 | 47510921 | PLUNGER, SC, HS, 2600/11.6KN, RH, LS, US | | |
| 13 | 1 | 81400082 | RETAINER, SC, HS, 2600, US | | |
| 14 | 3 | 90199958 | ASSY,BALLSEAT,SC,2600/5000 | X | X |
| 15 | 1 | 39F54002 | BU RING,(-212 CUSTOM) | X | X |
| 16 | 1 | 39T55003 | GASKET, (-124) | X | X |
| N/A | N/A | 60414503 | KIT, SEAL, STANDARD | NOTED | N/A |
| N/A | N/A | 6V414503 | KIT, SEAL, FKM | N/A | NOTED |



| | |
|-----------------------------------|--|
| PARTS LIST | |
| | VEKTEK, INC. 1334 E. SIXTH AVE. P.O. BOX 625 EMPORIA, KS. 66801 U.S.A. |
| ASSEMBLIES AFFECTED 41461123US | PARTS LIST, ASSY, SC, TF, TC, 11.6KN, DA, RH, LS, US |
| SIZE A | MPL1454 |

| | | | | |
|---------|------------------------|--|------------|---------|
| A | 5660 | RELEASE | ALS | 3/24/25 |
| REV | IN ACCORDANCE WITH ECN | EFFECTIVE DATE | REVISED BY | DATE |
| DRW BY: | ALS | DRAWING STATUS: Released | | |
| DATE: | 3/4/25 | PRODUCTION APPROVED FOR RELEASED STATUS ONLY | | |